

# OUR COMPANY

Power Engineers Collaborative, L.L.C. (PEC) is a Midwest engineering firm based in Chicago, Illinois and Milwaukee, Wisconsin specializing in power generation from both fossil fuel and renewable energy sources. Our company is focused on providing engineering solutions to Utilities and Independent Power Developers for the expansion, modernization, consolidation, and creation of new power generation assets.

PEC participates as the Engineer of Record throughout development and execution phases of projects utilizing various technologies such as natural gas, biomass, waste products, and other renewable sources.

## Engineering Capabilities

- ✓ Expansion, modernization, or consolidation of existing power generation systems
- ✓ Development and design of new power generation systems
- ✓ Exhaustive studies on the optimal technology for planned power plants of all sizes
- ✓ Optimization of central utility plants for utilities, institutions, and industry

A Subsidiary of Zero6 Energy, Inc.



Zero6 Energy, Inc. is a Minnesota-based renewable energy company that pioneered community-based wind energy development by creating several currently-accepted financial, operational, and legal structures, which provide local ownership of medium-to-large scale wind farms. To date, Zero6 Energy has developed 27 wind energy projects (370MW) throughout the Midwest and has several other renewable energy projects in various stages of development throughout the world.



## Renewable Energy

Power Engineers Collaborative, L.L.C. provides conceptual engineering and detailed engineering support, along with owner's engineer and construction management services for the implementation of cutting-edge renewable technology projects, such as wind, solar, and biomass.



## Backfit/Betterment

Power Engineers Collaborative, L.L.C. participates in betterment projects of equipment and systems in existing power facilities, with engineering support related to piping and component replacements, equipment relocations, or new installations.

## Combined Heat & Power Projects

At the heart of PEC's approach is a developer mentality that makes us uniquely qualified to conceptualize & design combined heat and power projects in an effort to maximize savings to our customers.

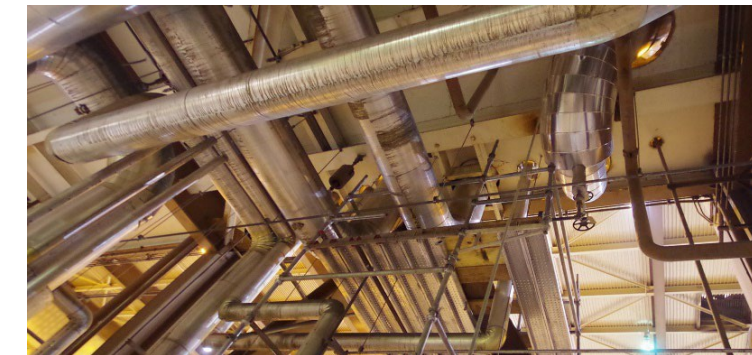
PEC is an accredited CHP service provider under the ComEd Energy Efficiency Program.



## Peakers/Combined Cycle

PEC specializes in sizing equipment to meet demand, and as such, equipment selection, performance evaluations, controls, and system integration are keys.

Power Engineers Collaborative participates as the Owner's engineer/Detailed Engineer on a range of products, serving our clients through multiple phases.



# OUR SERVICES

## Engineering Services

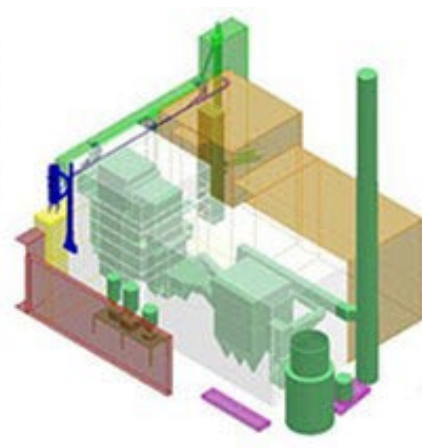
PEC personnel have a diverse background in power engineering and technical services, including:

- Environmental Engineering
- Mechanical & Process Engineering
- Electrical Engineering
- Instrumentation & Controls
- Civil/structural Engineering

## Consulting Services

PEC offers services in all phases of a power plant, including:

- Project Development
  - Environmental Assessment & Permitting
  - Conceptual Engineering & Design
  - Project Budgets
  - Project Schedules
- Detailed Engineering and Design
- Construction, Commissioning & Start-up



## COMPANY STATISTICS

- > **260** Clients
- > **900** Projects in the following areas:
  - ✓ Combustion Turbines
  - ✓ Boilers / Steam Plants
  - ✓ Reciprocating Engines
  - ✓ Coal Betterment / Retrofit
  - ✓ Renewables
  - ✓ Central Plant / CHP
  - ✓ AQCS
  - ✓ Advanced Technologies

### Project Types:

- ✓ Owner's Engineer
- ✓ Detailed Engineering
- ✓ EPC Projects

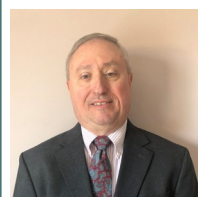


## DEVELOPMENT & ENGINEERING SERVICES



## CONTACT US

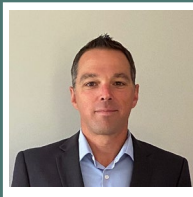
### Chicago



**Gene Poletto, P.E.**  
Managing Principal  
gpoletto@pecllc.com

150 N. Sunny Slope Rd, Suite 375  
Brookfield, Wisconsin 53005  
Phone: (630) 842-2304

### Milwaukee



**Anthony Chmielewski, P.E.**  
Managing Principal and President  
achmielewski@pecllc.com

150 N. Sunny Slope Rd, Suite 375  
Brookfield, Wisconsin 53005  
Phone: (262) 786-1700 ext. 1005

